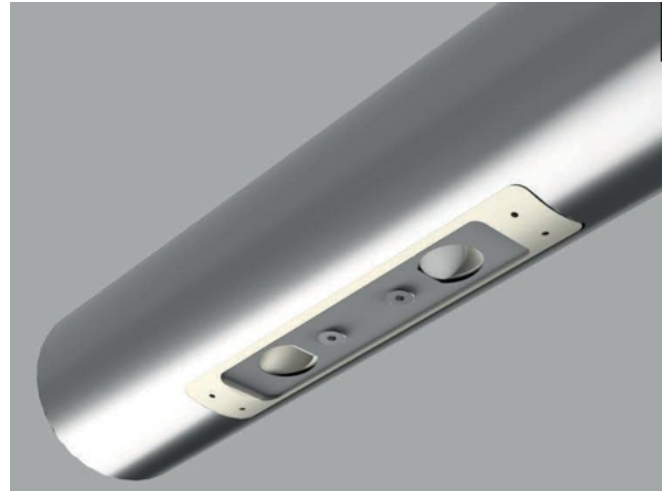


ML DUO LINEAR

- Projection 2 x 45°
- Twin lens asymmetrical projector.
Flush fitting, radiused or flat face.
- High output precision lighting with reduced glare.
- Tamper proof front installation.
- Screw fixing option.
- Anodised Aluminium body.
- Flat Polycarbonate cover.
- Flush fit into 20 x 110mm aperture. Easy installation, supplied with 2 x installation tools.



Electrical Features

- Lamp: 2 x 1w OSRAM LED
- 350ma 5.7v
- Installed flux: 250lumens
- 3watt 24v operation with Dc-Dc Converter LDD350LW
- Colour temp:2700 -6000K CRI 80
- Lens: 2 x 16 - 94 degrees
- Average life:1000,000 hours (350ma)
- Protection: IP67
- Impact resistance:IK10
- Supplied with 200mm Red /Black PTFE cable.
- Dimming and emergency options available.
- Plug and play and pre-made wiring loom options.

5 Year replacement part Warranty