

ML-SR-I25 SOLAR



TECHNICAL FEATURES

- Use of microcontroller technology.
- Appropriate for regular traffic zones and areas of poor visibility.
- Ideal for road delineation, bends/curves, crosswalk..
- Rising from road surface of 10mm
- Silicone-Free junction sealing technology allows a better, faster and cleaner maintenance
- Anti-Capillary Cable technology to prevent water ingress.
- SLEEP mode to prevent discharge during storage/transport.
- Ready snow plough machines.
- Flashing Synchronization by GPS technology.
- Constant brightness during all functioning period.
- Protection against deep discharge of the batteries/capacitors.
- High performance photovoltaic solar module.
- Energy storage in super capacitors or batteries.
- Internal prismatic system.
- Up to 1Km visibility distance due to high intensity LEDs.
- Many led's color options for all kind of applications.

MODES OF OPERATION

Always On or Flashing.

LED'S CONFIGURATION

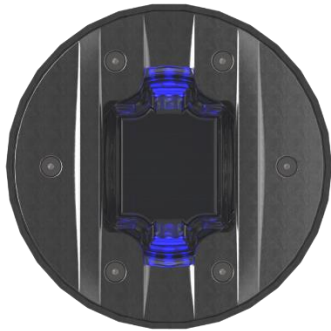
Unidirectional or Bidirectional.

ELECTRICAL FEATURES

Power Supply: Battery or Super Capacitor.
Working Temperature: -25 °C a +85°C

OPTICAL FEATURES

LED's Quantity: 3 LEDs (Unidirectional), 6 LEDs (Bidirectional)
LED's Type: 5mm
LED's Color: White, Warm White, Red, Amber, Green, Blue
LED's Viewing Angle: 15.º



MECHANICAL FEATURES

Dimensions: Ø160 x 57 mm

Material: Stainless Steel, Aluminum, Polycarbonate

Protection Index: IP68 and IK10

