

Multiple applications. One brilliant solution.

- Ideal for petroleum stations, restaurants, c-stores, parking structures, stockrooms, coolers, and car washes
- Linear illumination delivers an increased sense of safety and visual comfort for visitors without intruding on neighboring properties

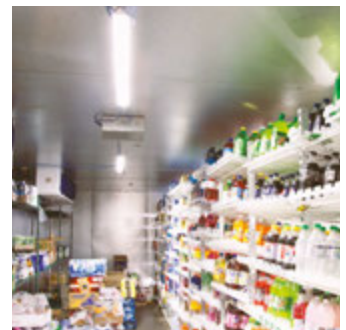


MAPCO



HighLINER 3 is a versatile product for canopies, soffits, awnings, and wall washes, that walks the line between sign and indoor/outdoor ambient lighting and offers natural, white, outdoor and indoor linear illumination for both new construction and retrofit projects, while saving energy, and reducing maintenance costs, for a brilliant bottom line.

- Easy installation in new construction and retrofit projects
- Improves walkway / aisle visibility and building aesthetics
- Easily daisy-chain up to six (6) 1.2-m (4-ft) luminaires with 100 W driver
- Co-extruded impact modified acrylic housing diffuses light and protects luminaire to provide long operating life
- Sealed to lock out moisture for even the most challenging applications
- Constant Voltage Technology (CV)
- IP68-rated
- 100,000 hours calculated life
- NSF/ANSI 2 qualified for use around food processing and on processing equipment



Peace of mind.

For over 60 years, SloanLED has delivered high-efficiency, long-lasting lighting solutions that represent significant energy and maintenance cost savings, easy installation, faster ROI, and exceptional performance with consistent brightness and uniformity.

Application information

For Lighting Systems Applications

Architectural drivers

| Description | Part number |
|---|--------------|
| 100 W 24 VDC Driver, 120-277 V, 0-10 V PWM | 701895-24S2D |
| 60 W 24 VDC Driver, 120 - 277 V, 0-10 V PWM | 701895-60S1D |

| Maximum length of luminaires in series (per power supply) [†] | | | | | | | | | | | | |
|--|------------|------------|------------|------------|-------------|-------------|-------------|-------------|-------------|-------------|-------------|-------------|
| Total nominal length (m / ft) | 0.6 m (2') | 1.2 m (4') | 1.8 m (6') | 2.4 m (8') | 3.0 m (10') | 3.7 m (12') | 4.3 m (14') | 4.9 m (16') | 5.5 m (18') | 6.1 m (20') | 6.7 m (22') | 7.3 m (24') |
| Luminaire input power (W) | 7.80 | 15.60 | 23.40 | 31.20 | 39.00 | 46.80 | 54.60 | 62.40 | 70.20 | 78.00 | 85.80 | 93.60 |
| 100 W 0-10 VDC | | | | | | | | | | | | |
| 90 W 0-10 VDC | | | | | | | | | | | | |
| 60 W 0-10 VDC | | | | | | | | | | | | |
| 40 W 0-10 VDC | | | | | | | | | | | | |
| Contact SloanLED | | | | | | | | | | | | |

[†] Driver/length pairing based on DLC qualified performance. Contact SloanLED for applications outside of shown range.



Branch circuit capacity

| Input voltage (VAC) | Input power | | Maximum fixtures per circuit | | |
|---------------------|-------------|------------------------|------------------------------|-------------|-------------|
| | Length | Driver input power (W) | 10A circuit | 15A circuit | 20A circuit |
| 120 | 0.3 m (1') | 4.13 | 258 | 388 | 518 |
| | 0.6 m (2') | 9.25 | 129 | 194 | 259 |
| | 1.2 m (4') | 18.50 | 64 | 97 | 129 |
| | 1.8 m (6') | 27.75 | 43 | 64 | 86 |
| | 2.4 m (8') | 37.00 | 32 | 48 | 64 |
| 277 | 0.3 m (1') | 4.13 | 598 | 898 | 1196 |
| | 0.6 m (2') | 9.25 | 299 | 449 | 598 |
| | 1.2 m (4') | 18.50 | 149 | 224 | 299 |
| | 1.8 m (6') | 27.75 | 99 | 149 | 199 |
| | 2.4 m (8') | 37.00 | 74 | 112 | 149 |

For Signage Applications

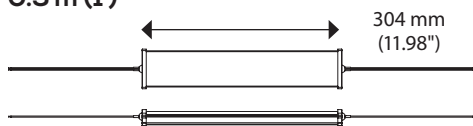
Power supply capacity

| 24 VDC Power supply | HighLINER 3 |
|----------------------|----------------|
| 100 W Power supply | 7 m (24 ft) |
| Watts per meter/foot | 11.8 W / 3.6 W |

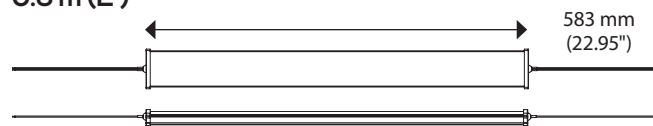


Dimensions

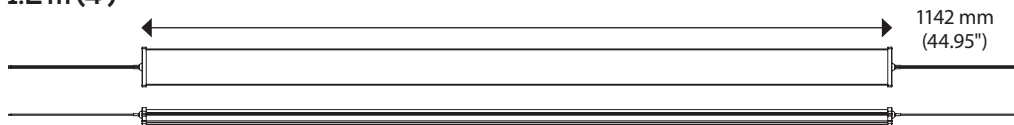
0.3 m (1')



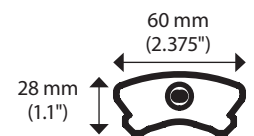
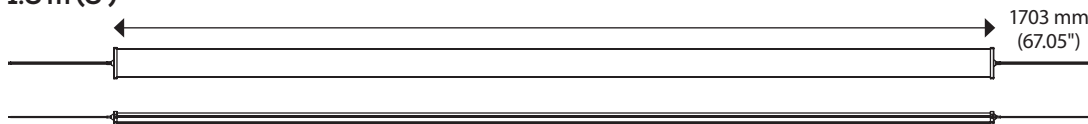
0.6 m (2')



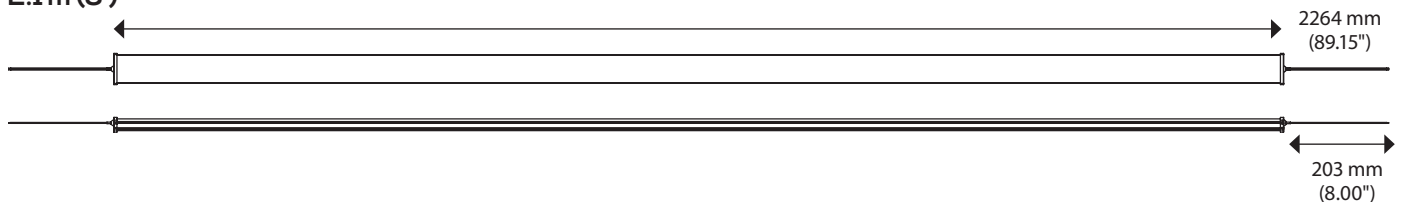
1.2 m (4')



1.6 m (6')



2.1 m (8')



HighLINER 3



Specifications

Electrical

Input voltage 24 VDC

| Model | System power | Output (nominal) | | Efficacy* | |
|------------|--------------|------------------|--------------|----------------|----------|
| | | 3500 K, 4000 K | 5000 K | 3500 K, 4000 K | 5000 K |
| 0.3 m (1') | 4.6 W | 559 Lumens | 607 Lumens | 126 lm/W | 132 lm/W |
| 0.6 m (2') | 9.3 W | 1,119 Lumens | 1,168 Lumens | | |
| 1.2 m (4') | 18.5 W | 2,237 Lumens | 2,430 Lumens | | |
| 1.8 m (6') | 27.8 W | 3,356 Lumens | 3,646 Lumens | | |
| 2.4 m (8') | 37.0 W | 4,475 Lumens | 4,861 Lumens | | |

Lighting

Light distribution Linear

Color temperatures (CCT)[†] 3500 K, 4000 K, 5000 K

Color rendering (CRI) >80

Performance

Operating temperature -25° C to +50° C (-13° F to +122 F)

Ingress protection Luminaire IP68[†]
Std. wire nut IP66
with housing[§]

UL locating rating Dry, damp, and wet locations

Life rating Per IES TM-21 @ 70° F (25° C):
Reported L₃₀ >36,000 hours
L₇₀ >60,000 hours
Calculated..... L₇₀ >100,000 hours[‡]

Dimming All luminaires dimmable with 0-10 VDC
or PWM input to drivers

Construction

Housing Acrylic, impact modified with UV stabilization

Body color White

Packaging Twelve (12) units per carton

Mounting

Mounting 203 mm (8 in) leads on each end,
mounting clips, and wire nut housings.
Optional components available.

Documentation

Warranty 10-year limited

Agency listings UL, NSF/ANSI 2, ETL, CE, RoHS

Files available LM-79, LM-80, IES

* Tolerance range for optical and electrical data +/- 15%.

† IP68 ratings provide protection for extreme outdoor and wet applications, or harsh weather exposure.
Do not mount in submerged applications.

‡ Based on LED component manufacturer data.

§ Luminaires ship with mounting clips and wire nut housings.

Ordering Information

Luminaire

Example: 701912-L250C3i18

| 701912- | | | C3i18 | |
|--------------|--------------|--------------------------------|--|--|
| Product | Length | Color temp. (CCT) [†] | Options | |
| 701912 | L1 | 35 | QC Quick connect (factory installed male/female connector at each end) 701187-DC or 701188-DC must be ordered for connection to driver | |
| | 0.3 m (1 ft) | 3500 K | | |
| | L2 | 40 | | |
| | 0.6 m (2 ft) | 4000 K | | |
| | L4 | 50 | | |
| | 1.2 m (4 ft) | 5000 K | | |
| | L6 | | | |
| | 1.8 m (6 ft) | | | |
| L8 | | | | |
| 2.4 m (8 ft) | | | | |

† Contact SloanLED Sales for additional CCT options.

Accessories

| Length | Qty included |
|------------|--------------|
| 0.3 m (1') | 2 |
| 0.6 m (2') | 2 |
| 1.2 m (4') | 3 |
| 1.8 m (6') | 4 |
| 2.4 m (8') | 5 |



Mounting clip^Δ
400686
Straight arm



Wire nut housing^Δ
400860
Two (2) pcs each
included per luminaire

Δ Luminaires ship with mounting clips and wire nut housings.

Cables and connectors

| Accessory | Part number | Description |
|---------------------------------|-------------|---|
| 701158-120 & 701158-180 | 701187-DC | 701188-DC |
| | | |
| Hook-up cable, 3.0-m (10-ft) | 701158-120 | Connects HighLINER 3 to power supply |
| Hook-up cable, 4.6-m (15-ft) | 701158-180 | |
| Wiring pigtail, large connector | 701187-DC | Male, outdoor-rated connector |
| Wiring pigtail, small connector | 701188-DC | Female, outdoor-rated connector |